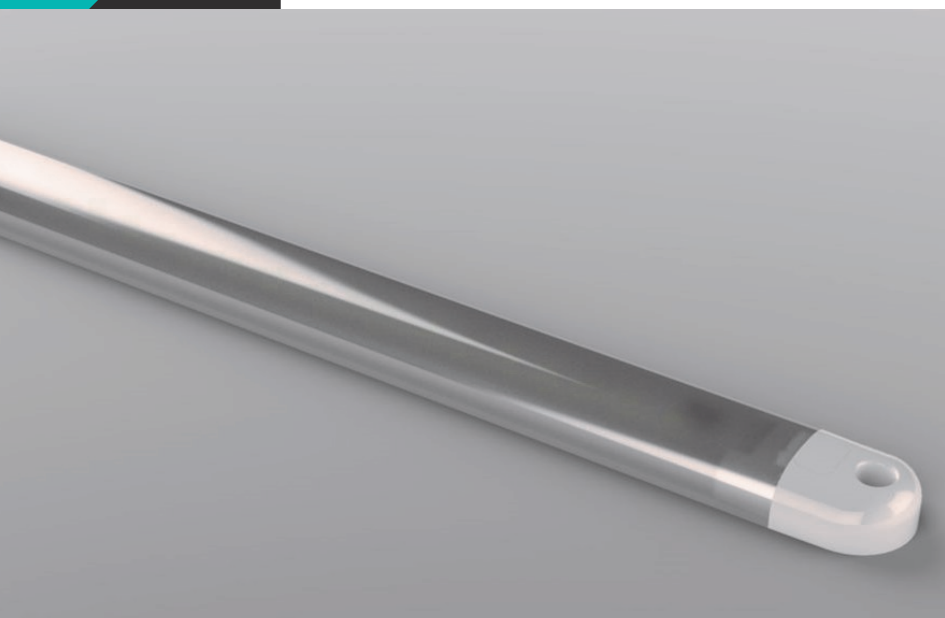


ISL-500 strip lights.

Developed for the harshest environments.

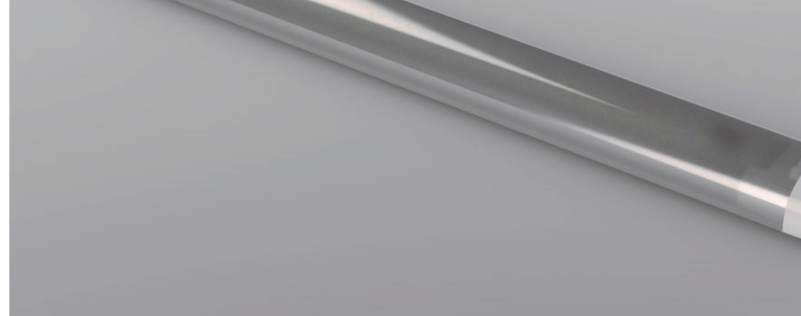
Combining cost effectiveness with efficiency, the ISL-500 range has been designed to provide a professionally engineered solution for vehicle interior lighting, whilst remaining highly affordable and incredibly durable. Suitable for both OEM and Aftermarket applications, every aspect of the product has been developed to ensure extreme reliability, even in the harshest conditions.

- High Output LED interior strip light
- Integrated switch option with Touch Sense switching - no moving parts, works with gloves
- PIR detection option
- 500 lumens at 350mm, 1000 lumens at 600mm, at 6000K colour temperature
- Easy installation & electrical connection
- Fully compliant with the external projections requirements for head impacts
- ECE Regulation 10 approved



LED lighting products for the automotive, marine, rail & aviation industries.

British design. Worldwide distribution.



Developed for the harshest environments, the ISL-500 range of LED strip lights are available in a variety of lengths and switching options, making them one of the most versatile ranges available.

Ultra-bright illumination

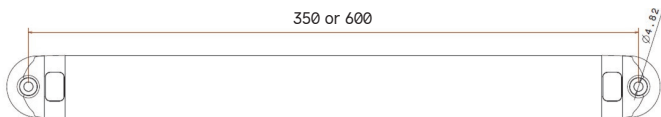
The high specification metal core PCB design of the ISL-500 range allows the LED components to operate reliably at greater outputs, providing the user “best in class” illumination with light outputs ranging from 500 lumens for the ISL.500 to more than 1000 lumens in longer lengths. The constant current electronic control of the LED’s prevents circuit damage and ensures a smooth and consistent illumination at differing voltages. The opaque diffusion lens material gives a smooth lighting appearance with no ‘dots’ and far greater light spread for improved illumination in all applications.

Touch-Sense switching

The ISL-500 range of switched lamps does not use traditional switching methods, instead adopting an innovative and highly reliable solid state touch pad for On/Off operation. Traditional mechanical switches can have a limited life from normal wear and tear, with premature failure often accelerated by the corrosion of contact terminals through moisture in the air. With the use of the TECH-LED “Touch-sense” technology these common failure modes are designed out of the product, providing the upmost reliability during service.

PIR switch option

Fully integrated into the product design, PIR sensing allows the operator to have illumination without physical switching.



Part code	Length	12v	24v	10-30v	Non-switched	Switched	PIR
ISL.500.12	350mm	✓			✓		
ISL.501.12	350mm	✓				✓	
ISL.502.12	350mm	✓					✓
ISL.500.24	350mm		✓		✓		
ISL.501.24	350mm		✓			✓	
ISL.502.24	350mm		✓				✓
ISL.503.12	600mm	✓			✓		
ISL.504.12	600mm	✓				✓	
ISL.505.12	600mm	✓					✓
ISL.503.24	600mm		✓		✓		
ISL.504.24	600mm		✓			✓	
ISL.505.24	600mm		✓				✓

